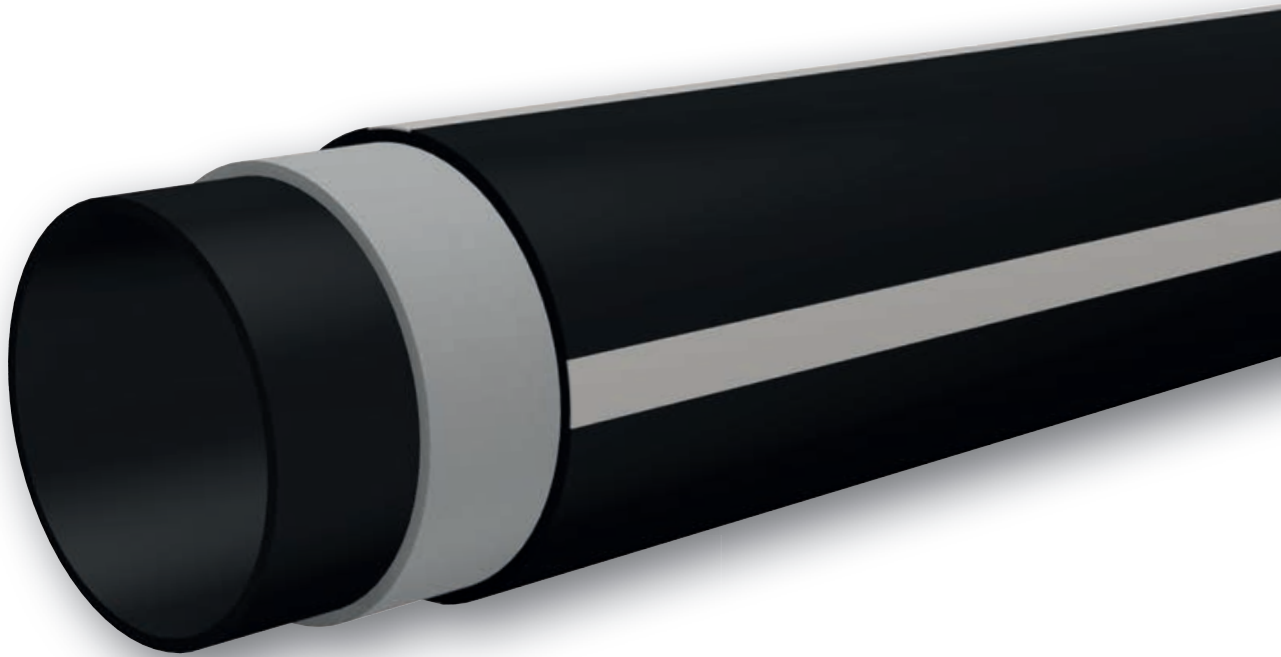




# BLACKTECplus

THE NEW PE100 PIPE WITH THE PLUS



- Bänninger Group of Companies
- Worldwide
- Made in Germany



# BLACKTECplus

THE NEW PE100 PIPE WITH THE PLUS



## BLACKTECplus

is the innovative result of our long years' effort of research and significantly reduces the linear expansion of PE100 pipes.

For you, decreased linear expansion means:

- Avoidance of expansion bends, compensators and fixed points
- Rapid installation and thus cost savings during construction phase
- More reliability and safety



## PRODUCT CHARACTERISTICS

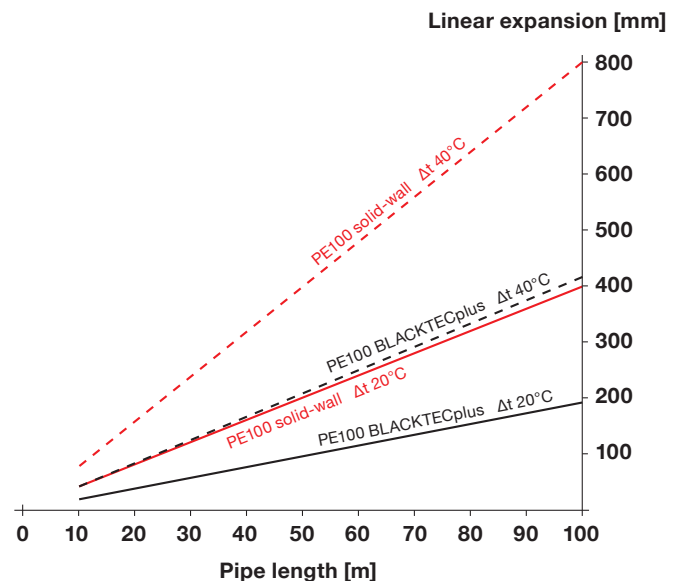
- Up to 55% less expansion compared to solid-wall pipes
- Low weight compared to steel pipes
- Joining technology: butt welding and electrofusion socket welding according to DVS guideline
- Impact resistant, even at very low temperatures
- -40°C to +60°C for PE100
- UV resistant, suitable for outdoor, above-ground use
- Outstanding chemical resistance
- Pressure range up to 16 bar
- Tested by IMA-Dresden

Dimensions and tolerances according to DIN 8074/8075, DIN EN 12201-1 as well as ISO 4427-2

## APPLICATIONS

- Cooling water, cooling systems
- Water treatment
- Power plants
- Applications with large temperature fluctuations

## LINEAR EXPANSION, USING A D110 PIPE AS AN EXAMPLE



$$\Delta L = L \cdot \Delta T \cdot \alpha$$

PE-solid-wall pipe = 0,20 mm/mK  
**BLACKTECplus = 0,09 mm/mK**

BR PE100 Pressure pipe BLACKTECplus **SDR11** 1,6MPa black 5m

Art Nr	D	e	DN	di	SDR	L	KG	VE1	VE2
Art No	[mm]		[mm]	[mm]		[m]		PU1	PU2
2F14 1150 15	63	5,8	50	51,4	11	5	1,11	5	500
2F14 1250 15	75	6,8	-	61,4	11	5	1,53	5	320
2F14 1350 15	90	8,2	65	73,6	11	5	2,19	5	220
2F14 1450 15	110	10,0	80	90,0	11	5	3,20	5	150
2F14 1550 15	125	11,4	100	102,2	11	5	4,20	5	125
2F14 1650 15	140	12,7	-	114,6	11	5	5,20	5	95
2F14 1750 15	160	14,6	125	130,8	11	5	6,80	5	60
2F14 1850 15	180	16,4	-	147,2	11	5	8,70	5	60
2F14 1950 15	200	18,2	160	163,6	11	5	10,7	5	45
2F14 2050 15	225	20,5	-	184,0	11	5	13,5	5	30
2F14 2150 15	250	22,7	200	204,6	11	5	16,2	5	25

BR PE100 Pressure pipe BLACKTECplus **SDR17** 1,0MPa black 5m

Art Nr	D	e	DN	di	SDR	L	KG	VE1	VE2
Art No	[mm]		[mm]	[mm]		[m]		PU1	PU2
2F15 1750 15	160	9,5	-	141,0	17	5	4,70	5	60
2F15 1850 15	180	10,7	150	158,6	17	5	5,90	5	60
2F15 1950 15	200	11,9	180	176,2	17	5	7,32	5	45
2F15 2050 15	225	13,4	200	198,2	17	5	9,50	5	30
2F15 2150 15	250	14,8	-	220,4	17	5	11,1	5	25

